

SAW Filter 413.75 MHz

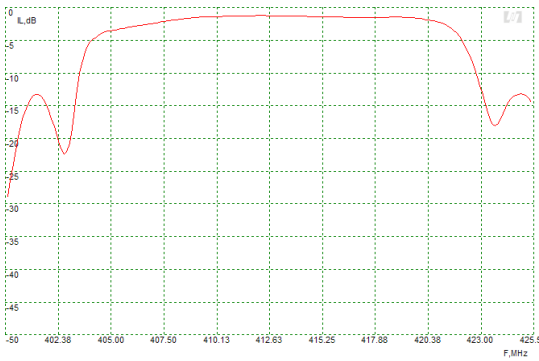
Bandwidth 14.88 MHz

Part Number A354-413.75M1

Complies with Directive 2002/95/EC (RoHS)

PRELIMINARY DATA

Typical Performance



Specifications

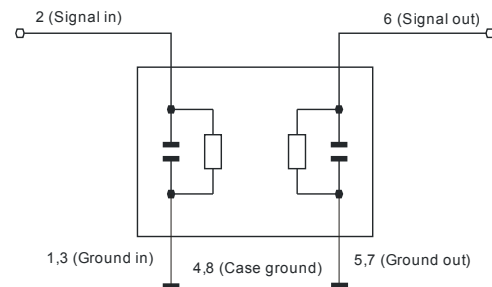
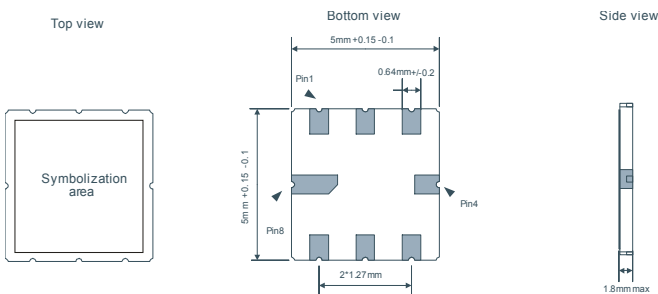
| Parameter | Unit | Min | Typ | Max |
|--------------------|------|--------|--------|--------|
| Central frequency | MHz | 413.50 | 413.75 | 414.25 |
| Inserted loss | dB | - | 1.24 | - |
| Bandwidth @-1.5 dB | MHz | - | 14.88 | - |
| Bandwidth @-35 dB | MHz | - | 46 | - |
| Amplitude Ripple | dB | - | 0.7 | - |
| Ultimate rejection | dB | - | 50 | - |
| Substrate | - | - | 64LNO | - |
| Temperature range | C | -55 | 22.5 | 85 |

Notes:

1. The design, manufacturing process, and specifications of this filter are subject to change.
2. Specification valid for measurements in AEC Design test fixture.

Case

Matching



$Z_{in} = Z_{out} = 50 \text{ Ohm}$

No matching required

