

## Low Loss SAW 24.6 MHz Filter

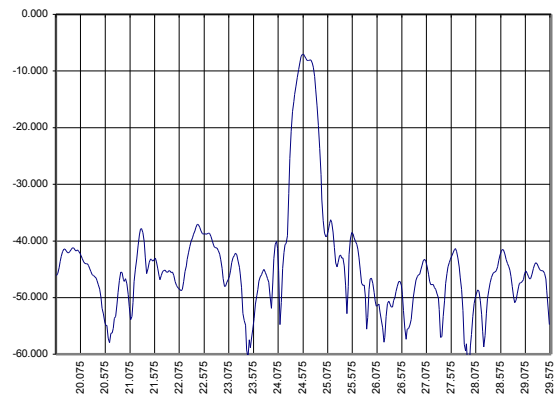
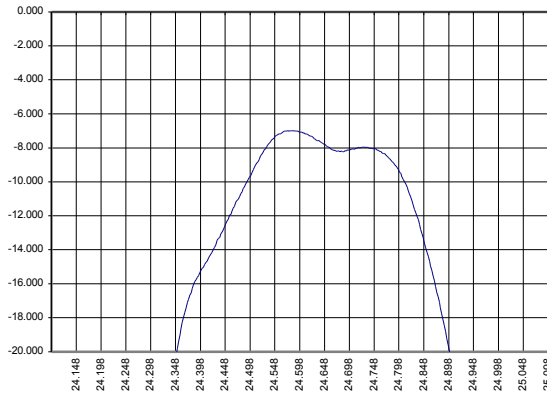
Bandwidth 0.25 MHz

Part Number A109-24.6M1

Complies with Directive 2002/95/EC (RoHS)

PRELIMINARY DATA

### Typical performance



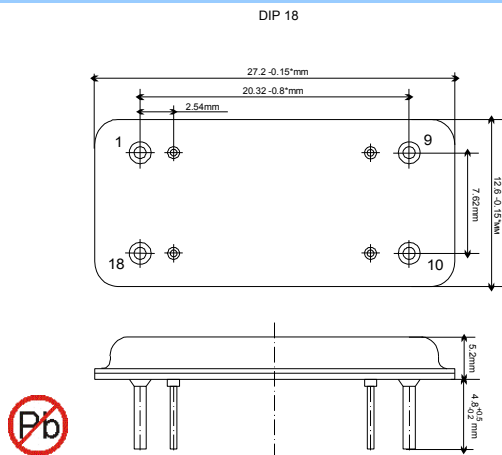
### Specifications

Parameter	Unit	Min	Typ	Max
Central frequency	MHz	24.55	24.60	24.65
Inserted loss	dB	-	-6.5	-9.0
Bandwidth @-1.5dB	MHz	-	0.25	-
Bandwidth @-20dB	MHz	-	0.63	0.76
Amplitude ripple	dB	-	-	1.5
Ultimate rejection	dB	-20.0	-25.0	-
Substrate	-	-	128 YX LiNbO3	-
Temperature range	°C	-55	22	85

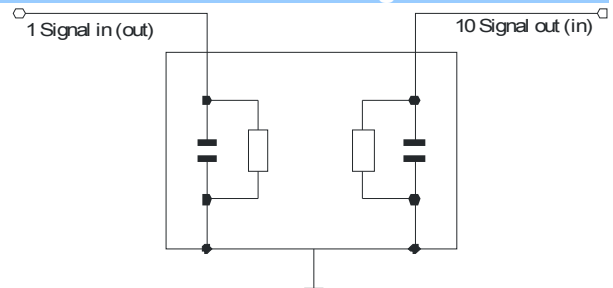
#### Notes:

1. The design, manufacturing process, and specifications of this filter are subject to change.
2. Specification valid for measurements in AEC Design test fixture.

### Case



### Matching



All others - Case ground  
Matching required:  
 $Z_{in} = Z_{out} = 50 \text{ Ohm}$

Input/output matching: series capacitor 10-120 pF and parallel inductor 797 nH at input port, series capacitor 10-120 pF and parallel inductor 400 nH at output port