

Low Loss SAW 942.5 MHz Filter

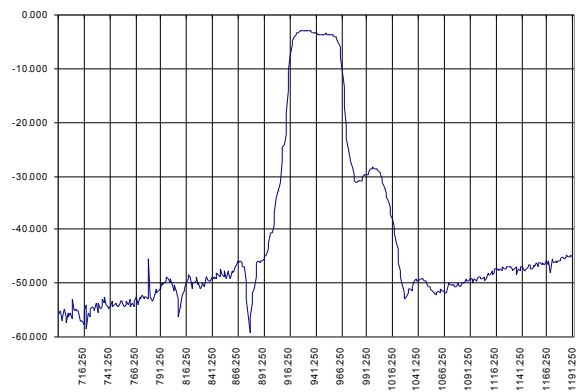
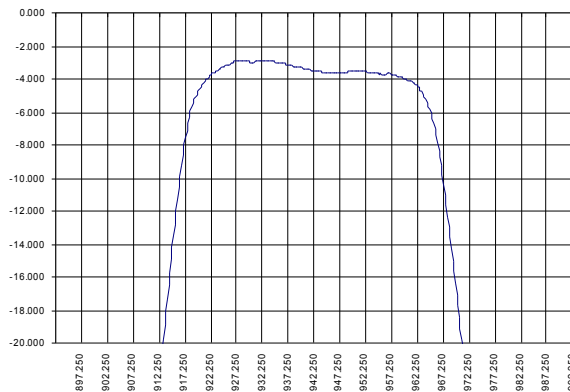
Bandwidth 43 MHz

Part Number A105-942.5M1

Complies with Directive 2002/95/EC (RoHS)

PRELIMINARY DATA

Typical performance



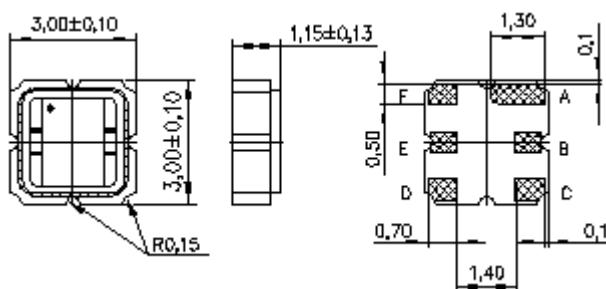
Specifications

Parameter	Unit	Min	Typ	Max
Central frequency	MHz	941.5	942.5	943.5
Inserted loss (unmatched)	dB	2.85	3.2	3.6
Bandwidth @-2dB	MHz	42	43	44
Bandwidth @-25dB	MHz	-	69.5	-
Bandwidth @-40dB	MHz	-	125	-
Amplitude ripple (in bandwidth 35 MHz)	dB	-	0.9	1.5
Ultimate rejection	dB	-	45	-
Substrate			64LNO	
Temperature range	°C	-55	22	85

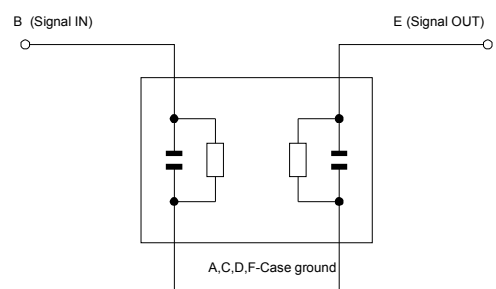
Notes:

1. The design, manufacturing process, and specifications of this filter are subject to change.
2. Specification valid for measurements in AEC Design test fixture

Case



Matching



Z_{in}=Z_{out}=50 Ohm
No matching required

