



Low Loss SAW 879 MHz Filter

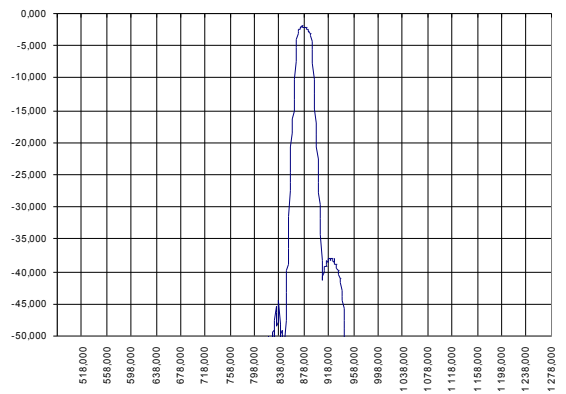
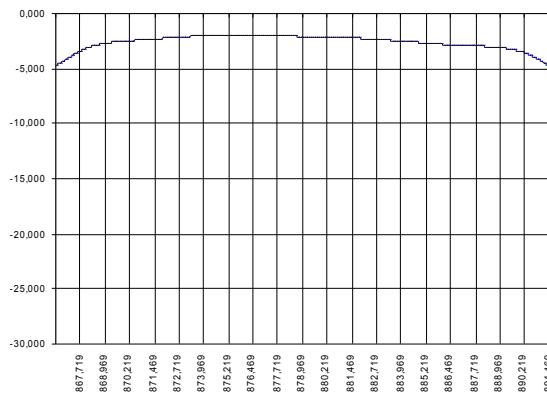
Bandwidth 23 MHz

Part Number A101-879M1

Complies with Directive 2002/95/EC (RoHS)

PRELIMINARY DATA

Typical performance



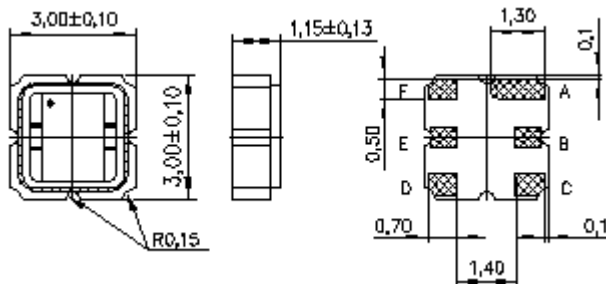
Specifications

Parameter	Unit	Min	Typ	Max
Central frequency	MHz	878	879	880
Inserted loss (unmatched)	dB	1.85	2.00	2.50
Bandwidth @-2dB	MHz	23.0	23.5	-
Bandwidth @-30dB	MHz	-	51.5	53.0
Amplitude ripple	dB	-	0.6	1.0
Group Delay variation	nsec	-	18	-
Ultimate rejection	dB	-	40	-
Substrate	-	-	36LTO	-
Temperature range	°C	-55	22	85

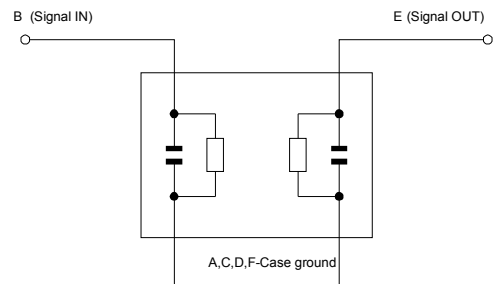
Notes:

1. The design, manufacturing process, and specifications of this filter are subject to change.
2. Specification valid for measurements in AEC Design test fixture.

Case



Matching



Z_{in}=Z_{out}=50 Ohm
No matching required

